

Notes for MS EXCEL

Very Short Answer Type Questions

Question 1:

Define the term workbook.

Answer:

A workbook is a collection of worksheets. By default, there are three worksheets in every workbook.

Question 2:

Reena is new to Excel. Her instructor has asked her to open Excel on her PC and questioned about active cell. Help Reena in identifying the active cell on her screen.

Answer:

An active cell is a cell with heavy black color boundary.

Question 3:

What is the default alignment of number, text and formula in a spreadsheet?

Answer:

Default alignment of text or label entry is left alignment and for numbers and formula it is right alignment.

Question 4:

Elaborate the formatting necessary.

Answer:

With formatting, we can make some data to be bolder, rotated or in different color. So, basically formatting provides worksheet a neater and more legible outlook.

Question 5:

Soham has clicked on the cell residing at the intersection of first row and ninth column. What will be the address of the selected cell?

Answer:

First row and ninth column address will be 1I.

Question 6:

How many ways are there for adding a new worksheet in an Excel workbook?

Answer:

There are two methods of adding a new worksheet in Excel workbook; Insert worksheet tab at the bottom and Insert button on cells group under Home tab.

Question 7:

In Excel, how many ways are there to express/format a number?

Answer:

Numbers in Excel can be expressed in many different formats like date, time, percentage or decimals.

Question 8:

Name the toolbar of spreadsheet which has all the options of changing the font properties.

Answer:

Formatting Toolbar

Question 9:

What do you mean by relative referencing?

Answer:

Cell referencing in which the cells are referred by their relative position in the worksheet relative to a particular cell is called relative referencing.

Question 10:

How many cells would be there in the cell range [A1: B2]?

Answer:

There would be 4 cells in the given cell range.

Question 11:

The cell A1 has value Monday. If you are asked to click and drag the Fill handle of A1 downside then what will be the contents of cell A2, A3, A4 and A5?

Answer:

Cells A2, A3, A4 and A5 will contain Tuesday, Wednesday, Thursday and Friday respectively.

Question 12:

If $6 - 5 * 2$ is entered in a cell, then what will be the cell content?

Answer:

-4 will be contained in cell as a result.

Question 13:

In a spreadsheet software, the formula $=A1 + \$A\2 was entered in cell A3 and then copied into cell B3. What is the formula copied into B3?

Answer:

$=B1 + \$A\2 will be copied into B3.

Question 14:

Write down the formula for adding values of cells A1 to A5.

Answer:

Formula for adding values of cells A1 to A5 would be $=SUM(A1 : A5)$.

Question 15:

State difference between COUNT() and COUNTA() function.

Answer:

The only difference between the COUNT() and COUNTA() function is that the COUNTA() function computes the numbers as well as text entries, while the COUNT() function counts only numbers.

Question 16:

Hansika wants to apply MIN function on a cell range, but all the values in that range are of Boolean. What value will be returned by the MIN function?

Answer:

MIN function will return 0 (zero) in this case.

Question 17:

Why we cannot add titles to an embedded chart once chart is ready?

Answer:

Titles have not been entered in chart elements step. And, these cannot be added later once chart is ready.

Question 18:

Write down the importance of legend in charts.

Answer:

With the help of legend, each data series can be uniquely identified by assigning a unique color or pattern.

Question 19:

What will be the column names of the below statement?

1. 26th column
2. 28th column

Answer:

1. Z
2. AB

Short Answer Type Questions

Question 1:

What is the difference between a workbook and a worksheet?

Answer:

Differences between workbook and worksheet are as follows:

Workbook

Worksheet

A workbook is an Excel file with one or more worksheets.

A worksheet is a single spreadsheet of data.

A workbook would be the entire binder, with everything in it.

A worksheet would be like one section in that binder.

Question 2:

Write down the significance of electronic spreadsheets.

Answer:

Using electronic spreadsheets, large volume of data can be stored in worksheets. Worksheets can be managed, edited, viewed, retrieved and printed easily in desired format. Electronic spreadsheets support charts, which represent data pictorially.

Question 3:

Is it possible to remove a worksheet? State the process of doing it.

Answer:

Yes, it is possible to remove a worksheet. To remove a worksheet right-click on the Sheets tab of the sheet that you want to delete and choose Delete from pop-up menu, or choose Delete Sheet from the pop-up menu of Delete option on cells group under Home tab.

Question 4:

Define the meaning of formula.

Answer:

Formula plays a major role in spreadsheet making. If we all needed to do is to put text and numbers in rows and columns, just about any Word processing program would fill the bill. Formula allows us to perform calculations using values from any cells to have the result appear in the formula cell.

Question 5:

Suggest the appropriate functions for the following situations:

1. For returning the minimum value out of a range A1 to C5.

2. For determining whether the customer is eligible for discount or not from the bill amount stored in cell D5. A customer is eligible for discount if bill amount >5,000.

Answer:

1. = MIN(A1 : C5)
2. = IF(D5>5,000, "Discount", "NoDiscount")

Question 6:

Suggest the appropriate function for the following situations:

1. Selecting the maximum value out of a range A1 to B20.
2. Calculating average of marks entered in cells E5, F5, G5, H5 and I5.
3. Determining whether the student has passed (if scored ≥ 40) or not from the marks stored in cell J10.

Answer:

1. = MAX(A1 : B20)
2. = AVG(E5:I5)
3. =IF(J10 \geq 40, "Pass", "Fail")

Question 7:

Sana has entered 49+30 in a cell. The worksheet is not displaying 79 in the cell. Instead, 49+30 is getting displayed. Help, Sana in rectifying the problem.

Answer:

In Excel, every formula must start with an = (equal) sign.

Since, Sana has not put = sign before 49+30, thus she is not able to see the desired result will be displayed if she will use = (49 + 30) formula.

Question 8:

What is the use of the COUNT() function in Excel?

Answer:

Excel's COUNT() function can be used to total the number of cells in a selected range. The COUNT() function will add up the number of cells in a selected range that contains numbers.

Question 9:

For what purpose pie charts are useful?

Answer:

Pie charts are useful for the following purposes:

1. They convey approximate propositional relationship at a point in time.
2. They compare part of a whole at a given point in time.
3. Exploded portion of a pie chart emphasize a small proportion of parts.

Long Answer Type Questions

Question 1:

Explain the concept of cell referencing alongwith its various types.

Answer:

Excel supports three types of cell referencing, which are as follows:

1. **Relative** Every relative cell reference in formula automatically changes when the formula is copied down a column or across a row. As the example illustrated here shows, when the formula is entered (= B4 — C4) in Cell D4 then this formula copied in D5 then it will change into (= B5 — C5) related to cell.
2. **Absolute** An absolute cell reference is fixed. Absolute references do not change if you copy a formula from one cell to another. Absolute references have dollar sign (\$) like \$\$S\$9. As the shows, when the formula =C4*\$D\$9 is copied from row, the absolute cell reference remains as \$D\$9. ‘
3. **Mixed** A mixed cell reference has either an absolute column and a relative row, or an absolute row and a relative column, e.g. \$A1 is an absolute reference to column A and a relative reference to row 1. As a mixed reference is copied from one cell to another, the absolute reference stays the same but the relative reference changes.

Question 2:

Explain any five functions that can be used in a worksheet.

Answer:

1. SUM Function

This function, as clear from name, is used to add all the values provided as argument and to display the result in the cell containing function.

Argument Type All Numbers Return Type Number

Syntax = SUM(number1, number2,)

e.g. if you want to display the sum of values of cells A1, A2, A5 and A6 in cell A9, then you need to simply type = SUM(A1,A2,A5,A6) in cell A9 and press Enter.

The sum will be displayed in cell A9. If you want to add a range of values, then provide that range in SUM function as an argument.

e.g. if you want to add values from A1 to A5, then write like =SUM(A1:A5).

- If an argument is an array or reference, only numbers in that array or reference are counted. Empty cells, logical values or text in the array or reference are ignored.
- If any arguments are error values or if any arguments are text that cannot be translated into numbers, Excel displays an error.

2. AVERAGE Function

This function calculates the average of all the values provided as argument to this function.

Argument Type All Numbers Return Type Number

Syntax = AVERAGE(number1, number2,)

e.g. to calculate the average of the values of range starting from A1 to A5 in cell B9, you need to write = AVERAGE(A1:A5) in cell B9.

3. COUNT Function

This function counts the number of cells that contain numbers and numbers within the list of arguments. Argument Type Any Type Return Type Number

Syntax = COUNT(value1, value2,)

e.g. if the values contained in cells A1, A2, A3 and A4 are 5, 7, TRUE and 10 respectively, then – COUNT(A1:A4) will return 3.

- Arguments that are numbers, dates or text representation of numbers (e.g. a number enclosed in quotation marks, such as '1') are counted.
- Arguments that are error values or text that cannot be translated into numbers are not counted.
- If an argument is an array or reference, only numbers in that array or reference are counted. Empty cells, logical values, text or error values in the array or reference are not counted.

4. COUNTA Function

This function is similar to the COUNT() function. The only difference is that the COUNTA() function also calculates the text entries even when the entries contain an empty string of length 0(zero), i.e. “ ”, but empty cells are ignored. The COUNTA() function counts the total number of values in the list of arguments.

Argument Type Any Type Return Type Number

Syntax = COUNTA (number 1, number 2, ...)

e.g. if the value contained in cells A1, A2, A3 and A4 are 5, 7, TRUE and 10 respectively then = COUNTA (A1 : A4) will return 4.

5. MAX Function

This function is used to return maximum value from a list of arguments.

Argument Type All Numbers Return Type Number

Syntax = MAX(number1, number2,)

e.g. if the values contained in cells A1, A2, A3 and A4 are 5, 7, 2 and 10 respectively then = MAX(A1:A4) will return 10.

- MAX will consider only numeric and logical values to compute maximum.
- If an argument is an array or reference, only numbers in that array or reference are used. Empty cells or text in the array or reference are ignored.
- If the arguments contain no numbers, MAX returns 0 (zero).
- Arguments that are error values or text that cannot be translated into numbers cause errors.

Question 3:

Write down the name and purpose of various components of a chart.

Answer:

Various components or parts of chart are as follows:

1. X-axis Refers to a horizontal axis, which is also known as category axis.
2. Y-axis Refers to a vertical axis also known as value axis.

3. X-axis title Conveys the full details of the X-axis values.
4. Y-axis title Conveys the full details of the Y-axis values.
5. Data series Refers to a set of data that you want to display in a chart.
6. Chart area Refers to the total space that is enclosed by a chart.
7. Plot area Refers to the main region of the chart in which your data is plotted.
8. Chart title Denotes the type of data plotted in a chart.
9. Legend In a chart showing different data series, a unique color or pattern is assigned to each data series. This unique color or pattern is known as a legend.
10. Gridlines These are the horizontal and vertical lines within the plot area in a chart.
11. Data label Provides additional information about a value in the chart, that is coming from a worksheet cell.

Question 4:

What are the various types of charts? Explain each.

Answer:

The various types of charts in Excel are given below:

Line Chart: Data that is arranged in columns or rows on a worksheet can be plotted in a line chart. Line charts can display continuous data over time, set against a common scale and are therefore ideal for showing trends in data at equal intervals. In a line chart, category data is distributed evenly along the horizontal axis and all value data is distributed evenly along the vertical axis.

Pie Chart: Data that is arranged in one column or row only on a worksheet can be plotted in a pie chart. Pie charts show the size of items in one data series, proportional to the sum of the items. The data points in a pie chart are displayed as a percentage of the whole pie.

Scatter Chart: Data that is arranged in columns and rows on a worksheet can be plotted in an XY (scatter) chart. Scatter charts show the relationships among the numeric values in several data series, or plots two groups of numbers as one series of XY coordinates.

Bar Chart: Data that is arranged in columns or rows on a worksheet can be plotted in a bar chart. Bar charts illustrate comparisons among individual items.

Area Chart: Data that is arranged in columns or rows on a worksheet can be plotted in an area chart. Area charts emphasize the magnitude of change over time and can be used to draw attention to the total value across a trend, e.g. data that represents profit over time can be plotted in an area chart to emphasize the total profit.

Question 5:

How are charts created in Excel? Write the steps.

Answer:

Creating a Chart:

Here is a worksheet that shows the marks of students in a class subject wise. To create a chart, do the following:

1. Select the data that you want to show, including the column titles and the row labels.
2. Then click the Insert tab and in the Charts group, click the Column button. You could select another chart type, but column charts are commonly used to compare items.
3. After you click Column, you'll see a number of column chart types to choose from. Click Clustered Column, the first column chart in the 2-D Column list.

A ScreenTip displays the chart type name, when you rest the pointer over any chart type. The ScreenTip also provides a description of the chart type and gives you information about that, when to use each one.

If you want to change the chart type after you create your chart, click inside the chart. On the Design tab under Chart Tools, in the Type group, click Change Chart Type and select another chart type.

Application Oriented Questions

Question 1:

In a worksheet, cell K12 has a value. A formula is to be entered in cell K15, such that if the value in cell K12 is more than 300, the value in cell K15 would be 1.33 times the value of cell K12. Otherwise, the value in cell K15 would be 1.5 times the value in cell K12. Explain the formula that you use to achieve this.

Answer:

In cell K15, enter the conditional statement as: = IF (K12 > 300, K12 *1.33, K12 * 1.5). Here, IF condition checks the value at K12, that is, if it is greater than 300, then calculate 1.33 of K12, otherwise 1.5 of K12.

Question 2:

Describe, how the owner of the restaurant could use the spreadsheet for financial modeling?

Answer:

1. Decide on a total purchasing need for next night/week/month/year.
2. Change figures in spreadsheet.
3. Raise/lower/add/delete any value.
4. Compare results with predicted/total needed/target results.
5. To general use for budgeting like to calculate profit.

Question 3:

Write command for the operations (i) to (iii) based on the spreadsheet below:

	A	B	C	D	E	F	G
1	Item Code	Item Desc	Type	Unit Price	Qty	Amount	Rebate
2	101	Pen	Consumable	150	1500		
3	102	Photo Copier	Non-consumable	240000	24		
4	103	Photocopy Machine	Non-consumable	6400	70		
5	104	Eraser	Consumable	108	8400		

1. To calculate the Amount as Unit Price*Qty for each item in Column F.
2. To calculate the Rebate as 7% of Amount if Type is consumable, else calculate Rebate as 11% of Amount in Column G.
3. To calculate total Rebate across all items in cell G6.

Answer:

1. At cell F2, type =D2*E2 and then copy this formula using mouse Fill handle onto range F3 : F5.
2. At cell G2, type =IF(C2="Consumable", F2*0.07, F2*0.11) and then copy this formula using mouse Fill handle onto range G3 : G5.
3. At cell G6, type =SUM(G2 : G5).

Question 4:

Arihant stationery keeps stock of various stationeries in his shop. The proprietor wants to maintain a stock value and reorder level for following items as given in a spreadsheet. Write formulas for the operations (i) to (iii) and answer the questions (iv) and (v) based on the spreadsheet given below alongwith the relevant cell address:

1. To calculate the Stock Value as product of 'Quantity in Stock' and 'Rate' for each item present in the spreadsheet.
2. To calculate the 'Quantity to Order' as 'Minimum Stock Quantity'-'Quantity in Stock' for each item.
3. To calculate the 'Order Value' as product of 'Quantity to Order' and 'Rate' for the items if 'Quantity to Order' \geq 0, else assign the value as 0.
4. Proprietor wants to graphically represent his stationery stock. Suggest him the most appropriate feature of MS-Excel.
5. If Quantity in Stock's value changes, will have to redo all the calculations for that particular column? Explain.

Answer:

1. At cell F2, type = D2*E2 and then copy this formula using Fill handle in range F3 : F5.
2. At cell G2, type = C2 – D2 and then copy this formula using Fill handle in range G3 : G5.
3. At cell H2, type = IF (G2 \geq 0, G2*E2, 0) and copy this formula using Fill handle in the range H3 : H5.
4. He should create chart of any type to graphically represent his data.
5. No the recalculation is not again required because the formula and functions that are given changes according to the values in the cells.

Question 5:

Neha Mittal wants to store data of her monthly expenditure for a period of two year and also wants to perform some calculation and analysis. Which Microsoft application, will you suggest Neha should use for this purpose and why?

Answer:

Microsoft Excel should be used because it cannot only be used for storing data, but also be used to perform calculations and analysis of the data.

Multiple Choice Questions

Question 1:

A worksheet is a

- (a) collection of workbooks
- (b) processing software
- (c) combination of rows and columns
- (d) None of the above

Answer:

(c) A worksheet is a combination of rows and columns.

Question 2:

By default, a workbook in Excel contains how many worksheets?

- (a) 16
- (b) 3
- (c) 15
- (d) 256

Answer:

(b) 3 worksheets are present in every workbook by default.

Question 3:

The simplest way to move data from one location to another in Excel is

- (a) by Quick Access toolbar
- (b) using Cut and Paste
- (c) by the drag and drop method
- (d) Both (b) and (c)

Answer:

(d) We can move data using cut and paste and also drag and drop method is the easiest one.

Question 4:

The AutoFill can apply from

- (a) left to right
- (b) right to left
- (c) up to down
- (d) All of these

Answer:

(d) AutoFill can apply from any side.

Question 5:

The default page orientation in Excel is

- (a) Landscape
- (b) Horizontal
- (c) Portrait
- (d) None of these

Answer:

(c) The default page orientation in Excel is Portrait.

Question 6:

Word wrapping means

- (a) the text remains in the straight line
- (b) the text distributed in multiple lines

- (c) displays text vertically within a cell
- (d) displays the selected text in a different font style

Answer:

- (b) Word wrapping distributes the text in multiple lines.

Question 7:

A term that is used in spreadsheet which forces a line break in a cell when the cell entry is too large to fit in the cell.

- (a) Wrap (b) Line Break
- (c) Cell Break (d) Multiline Cell

Answer:

- (a) Wrap

Question 8:

The default alignment of text in a cell is

- (a) Left (b) Right
- (c) Centered (d) Justified

Answer:

- (a) In Excel, by default the text is left aligned.

Question 9:

Absolute cell referencing occurs when

- (a) formula is dragged but the cell references do not adjust.
- (b) spreadsheet is saved with “absolute” as file name.
- (c) formula is dragged and the cell reference adjusts automatically.
- (d) \$ symbol is automatically added with each cell value.

Answer:

- (a) Absolute cell referencing occurs when formula is dragged but the cell references do not adjust.

Question 10:

Find out the odd one

- (a) Absolute (b) Relative (c) Mixed (d) AutoFill

Answer:

- (d) Absolute, relative and mixed all three are the types of cell referencing but AutoFill is not.

Question 11:

Cell address \$B\$5 in a formula means

- (a) it is a mixed reference
- (b) it is an absolute reference
- (c) it is a relative reference
- (d) None of the above

Answer:

(b) \$ sign in a formula need to add before row number and column letter for absolute referencing.

Question 12:

While entering a formula, cell address B\$5 represents

- (a) Absolute Referencing
- (b) Mixed Referencing
- (c) Relative Referencing
- (d) All of these

Answer:

(b) It represents mixed reference because we are using \$ sign before 5 only. Hence, as we will drag this only B will change but 5 will remain same.

Question 13:

A cell range starting from first row, first column to fourth row and fifth column can be represented as

- (a) [A1 : E4] (b) [AO : E3]
- (c) [E4 : A1] (d) [E3 : AO]

Answer:

(a) [A1:E4] because row count starts from 1 and column count starts from A and first we write the starting cell address.

Question 14:

A cell range always has the symbol between the cell references.

- (a) ; (semicolon) (b) . (full stop)
- (c) ,(comma) (d) :(colon)

Answer:

(d) A cell range always has the : (colon) symbol between the address of ranges.

Question 15:

If cell range A1 : A5 contain the numbers 20, 16, 5, 35 and 7 then = AVERAGE(A1 : A5, 50) will display.

- (a) 22.167 (b) 27.167
- (c) 10 (d) 40

Answer:

(a) 22.167

Question 16:

COUNTA (4, 78, False, 18) will return

- (a) 2 (b) 3 (c) 4 (d) 5

Answer:

(c) Because the logical values and numbers directly provided as argument of COUNTA, a function will be counted.

Question 17:

If you type =2 * (6-4) in cell A1, what value will be display?

- (a) 2 (b) 4 (c) 6 (d) 8

Answer:

(b) = 2*(6-4) = 2*(2) = 4

Question 18:

You can place the chart legend in the chart at

- (a) Bottom (b) Corner
(c) Top, Right and Left (d) All of these

Answer:

(d) You can place the chart legend in the chart at Bottom, Corner, Top, Right and Left.

Question 19:

In Excel chart, text displayed at data points to indicate the specific category is called

- (a) data point (b) data series
(c) data label (d) legends

Answer:

(c) Text displayed at data points to indicate the specific category is called data label.

Question 20:

You have used a spreadsheet to calculate the average marks of a class in Mathematics. Which input is essential to find the average marks?

- (a) Marks of each student of class in Science
(b) Marks of each student of class in Mathematics
(c) Average marks in Mathematics of each student of class
(d) Names and roll numbers of each student of class

Answer:

(b) Marks of each student tor Mathematics will be required for calculating average marks of mathematics.

Question 21:

A chart is created on the basis of values in

- (a) mail merge (b) database
(c) spreadsheet (d) document

Answer:

(c) A chart is a pictorial representation of data that created on the basis of values in a spreadsheet.

Question 22:

Which of the following charts is used for comparing the changes in data over a period of time?

- (a) Bar chart (b) Area chart
(c) Scatter chart (d) Line chart

Answer:

(d) Line chart emphasizes on rate of change rather than volume of change over time.

Question 23:

Which of the following chart selects only one range of the data series?

- (a) Line chart (b) Pie chart
(c) Scatter Chart (d) Bar chart

Answer:

(b) Pie chart can select only one range of the data series.

Question 24:

The another name for the XY chart is

- (a) Column chart (b) Net chart
(c) Bar chart (d) Scatter chart

Answer:

(d) XY chart is also called Scatter chart.

Question 25:

Which of the following shortcut keys brings the cursor to the last cell on the sheet that contains data?

- (a) Ctrl+Home (b) Ctrl+End
(c) Ctrl + Page down (d) Ctrl+down arrow

Answer:

(b) Ctrl+End shortcut is used to bring the cursor to the last cell.

Question 26:

For selecting a non-continuous range of cells, you need to do what?

- (a) Press Alt key (b) Press Shift key
(c) Press Esc key (d) Press Ctrl key

Answer:

b By pressing Ctrl key and clicking on the desired cells a non-continuous cell range can be selected.

Question 27:

For selecting the entire worksheet in Excel, you need to press

- (a) Alt + Shift +eSpacebar
(b) Ctrl + Shift + Spacebar
(c) Shift + Spacebar
(d) None of the above

Answer:

(b) You need to press Ctrl + Shift + Spacebar for selecting the entire worksheet in Excel.

Question 28:

The sample of an Excel worksheet on the screen can be seen by

- (a) Print preview
- (b) Print
- (c) Review
- (d) None of the above

Answer:

(a) Print preview enables you to view the sample of worksheet before printing it on a paper.

Fill in the Blanks

Question 1:

Excel is a software package.

Answer:

spreadsheet

Question 2:

When you or, the selected range gets surrounded by a moving border.

Answer:

copy, cut

Question 3:

The and operations copies data from source range to target range and erases it from the source range.

Answer:

cut, paste

Question 4:

Address of the cell at 10th column and 30th row is

Answer:

J30

Question 5:

The cell having bold boundary is the

Answer:

active cell

Question 6:

Any formula in Excel starts with an

Answer:

equal (=) sign

Question 7:

The keyboard shortcut for copy is and for paste is

Answer:

Ctrl + C, Ctrl + V

Question 8:

In referencing, the relative address of the cell gets adjust with respect to the current cell.

Answer:

relative

Question 9:

For absolute referencing, sign is used before the parts of formula.

Answer:

\$

Question 10:

If you enter 15 + 30 in a cell, Excel will display

Answer:

15 + 30

Question 11:

To specify the number of decimal places in a cell the tab of the Format cells dialog is used.

Answer:

Fill series

Question 12:

The tool is used in spreadsheet that creates a growth series, wherein subsequent values follow an increasing or a decreasing geometric pattern.

Answer:

Source

Question 13:

The range of cells containing data that makes a chart is termed as data.

Answer:

Numbers

Question 14:

..... are text, number cell references enclosed within parenthesis in a formula.

Answer:

Arguments

True or False

Question 1:

You cannot open two different workbooks in Excel simultaneously.

Answer:

False You can open two different workbooks in Excel simultaneously.

Question 2:

When a cell containing a formula is moved, the cells referring the moved cell show an error value.

Answer:

False When a cell containing a formula is moved, the cells referring the moved cell does not show an error value.

Question 3:

A cell entry can be edited either in the cell or in the formula bar.

Answer:

True There are two ways to edit the data which has entered in the cell, i.e. in the cell or in the formula bar.

Question 4:

If the data entered in a cell is 546Z then, Excel will treat it as a number because it starts with a digit.

Answer:

False It will be treated as non-numeric data because it contains letters alongwith numbers.

Question 5:

We cannot enter the date/time in a cell.

Answer:

False Date/time can be added to an Excel cell.

Question 6:

The Fill handle tool is used for labour intensive entering data in a spreadsheet.

Answer:

True Entering data into a spreadsheet can be very labour intensive, but Fill handle tool autofill the entries and save time.

Question 7:

The Insert button is found on Cells group under Home tab.

Answer:

True Insert button is available on Cells group under Home tab and is used to insert cells, rows and columns.

Question 8:

The title of the chart tells the type of the chart.

Answer:

False The title of chart tells the name of the chart.

Question 9:

A chart is a graphical representation of worksheet data.

Answer:

True A chart is a graphical representation of worksheet data.

Question 10:

The contents of a cell can be changed by pressing F2 key on keyboard.

Answer:

True F2 is a shortcut for making cell editable.

Notes for MS Word

Very Short Answer Type Questions

Question 1.

How do you locate MS-Word 2007 on your computer system?

Answer:

To locate MS-Word on our computer system:

Click **Start** → **All Programs** → **Microsoft Office** → **Microsoft Office Word 2007**.

Question 2.

What is the use of ruler in MS-Word 2007 document?

Answer:

Ruler is used to set tabs, indents and margins for a document.

Question 3.

What is formatted text?

Answer:

Formatted text has styling information beyond the minimum of semantic elements: Colors, styles (bold face, italic), sizes and special features such as hyperlinks.

Question 4.

Write the name of alignments, which are available in MS-Word 2007.

Answer:

Left, Right, Center and Justify.

Question 5.

What is the use of Crop option in MS-Word 2007?

Answer:

Crop option allows a user to edit pictures (only cropping).

Question 6.

Write the steps to make the text bold.

Answer:

Steps to make a text bold are as follows:

- **Step 1:** Select the text.
- **Step 2:** Click the **Bold** button in the **Font** group on the **Home** tab.

Question 7.

Write the shortcut keys to format the text style bold, italic and underline.

Answer:

Bold – Ctrl+B, **Italic** – Ctrl+I, **Underline** – Ctrl+U

Question 8.

What are the basic features of printing in MS-Word 2007?

Answer:

The basic features of printing in MS-Word 2007 are as follows:

- Print
- Quick Print
- Print Preview

Question 9.

How can you print your document via Quick Print feature of printing?

Answer:

To print a document via Quick Print

Click **Microsoft Office Button** → **Print** → **Quick Print**.

Short Answer Type Questions

Question 1.

Define MS-Word 2007.

Answer:

MS-Word 2007 is a Word processing software package, which allows you to easily create a variety of professional looking documents like letters, reports and other documents using features such as Themes, Styles, SmartArt and more. It is a powerful tool that you can use to create effective documents.

Question 2.

What do you mean by ruler?

Answer:

Ruler appears on the top and on the left side of the document window. It allows to format the horizontal or vertical alignment of text in a document.

Two types of rulers are available in MS-Word 2007 as follows:

- Horizontal ruler indicates the width of the document.
- Vertical ruler indicates the height of the document.

Question 3.

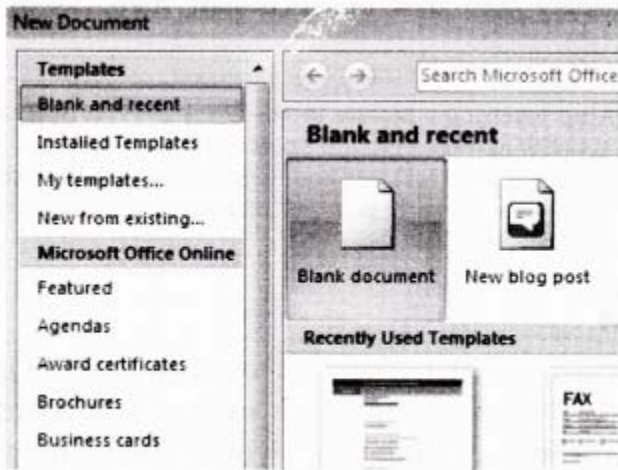
Write the steps to create a new document.

Answer:

Steps to create a new blank document are as follows:

- **Step 1:** Click the **Microsoft Office button**.

- **Step 2:** Select **New**, the New Document dialog box will appear as shown below:



New Document dialog box

- **Step 3:** Select **Blank document** under the Blank and recent section (It will be highlighted by default).
- **Step 4:** Click **Create** button, a new blank document will appear.

Question 4.

How to save a document as Word 97-2003?

Answer:

Steps to save a document as a Word 97-2003 are as follows:

- **Step 1:** Click the **Microsoft Office button**.
- **Step 2:** Select **Save As** → **Word 97-2003 Document**. The **Save As** dialog box will appear.
- **Step 3:** Select the location, where you want to save a document using the drop down menu.
- **Step 4:** Enter a name for the document in File name: box.
- **Step 5:** Click the **Save** button.

Question 5.

How to save a document as a PDF document?

Answer:

Steps to save a document as PDF or XPS are as follows:

- **Step 1:** Download the PDF extension
 - Click the **Microsoft Office button**.
 - Select **Save As** → **Find** add-ins for other file formats. This will open your web browser to the Microsoft site.
 - Follow the given instructions on the Microsoft site for downloading the PDF extension.
- **Step 2:** Click the Microsoft Office button.

- **Step 3:** Select **Save As** → **PDF or XPS**. The Publish as PDF or XPS dialog box will appear.
- **Step 4:** Select the location, where you want to save the document using the drop down menu.
- **Step 5:** Enter the name of the document in File name: box.
- **Step 6:** Click the **Publish** button.

Question 6.

What is the difference between the Save and Save As option?

Answer:

“**Save**” means the file gets saved under its current name, in whatever folder it was saved before or in the default folder of that computer whereas “**Save As**” gives you the opportunity to save the file under a different name and in another folder.

“**Save As**” allows you to name the updated version with a new name and at the same time preserving the old version.

Question 7.

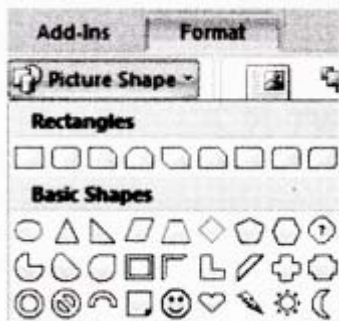
How can you change the shape of a picture?

Answer:

Change the Shape of a Picture

Steps to change the shape of a picture in a document are as follows:

- **Step 1:** Select the picture.
- **Step 2:** Click the **Picture Tools Format** tab.
- **Step 3:** Click the Picture Shape. A Picture Shape menu will appear.



- **Step 4:** Choose any shape as per the requirement.

Long Answer Type Questions

Question 1.

Explain different types of tabs available in MS-Word 2007.

Answer:

Tabs

These are similar to the menu system of MS-Word 2003. Instead of having drop down menus, MS-Word 2007 creates a Ribbon system, where buttons and commands are

grouped under the tabs. Some groups include a dialog launcher button in their lower right corner to bring up the additional options.

Different types of tabs are as follows:

- **Home** tab is used to change font, styles, setting of paragraph etc.
- **Insert** tab is used to insert page breaks, tables, illustrations, links, header and footer, text and symbols etc.
- **Page Layout** tab is used to change themes of a page, margin of a page, orientation of a page, insert a page border, column, format paragraph etc.
- **References** tab is used to insert table of contents, foot notes, citation and bibliography, captions, index, mark entry for index etc.
- **Mailings** tab is used to create envelopes, labels, start mail merge, write and insert fields and preview results etc.
- **Review** tab is used for proofing, comments, tracking, comparing the documents etc.
- **View** tab is used to change the outline or draft views, display the ruler or document map, zoom, switch windows etc.

Question 2.

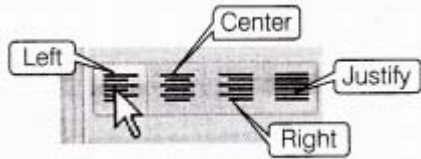
Explain the different text alignments.

Answer:

The text layout within a paragraph with respect to document margins is called text alignment.

Steps to change the text alignment in a document are as follows:

- **Step 1:** Select the **text** that you want to modify.



- **Step 2:** Select any one of the four alignment options (i.e. Left, Right etc) from the Paragraph group on the Home tab.

Command Tab	Description
Align Text Left	Aligns all the selected text to the left margin.

Center	Aligns all the selected text to an equal distance from the left and the right margins.
Align Text Right	Aligns all the selected text to the right margin.
Justify	Aligns all the selected text equal from both the sides and lines up equally to the left and the right margins. Traditionally many books, news letters and newspapers use full-justification.

Question 3.

What is the need to modify the spacing of the lines or paragraph of your text?

Answer:

An important part of creating effective documents lies in the document design. Line spacing or paragraph spacing is measured in lines or points, which is referred to as leading.

As a part of designing the document and making formatting decisions, you will need to know how to modify the spacing, just as you can format spacing between lines in your document, you can also choose spacing options between each paragraph.

Typically, extra spaces are added between paragraphs, headings or subheadings. Extra spacing between paragraphs adds emphasis and makes a document easier to read.

When you reduce the leading, you automatically bring the lines of text closer together. Increasing the leading will space the lines out, allowing for improved readability.

Question 4.

Explain how text wrapped around a picture from picture tools.

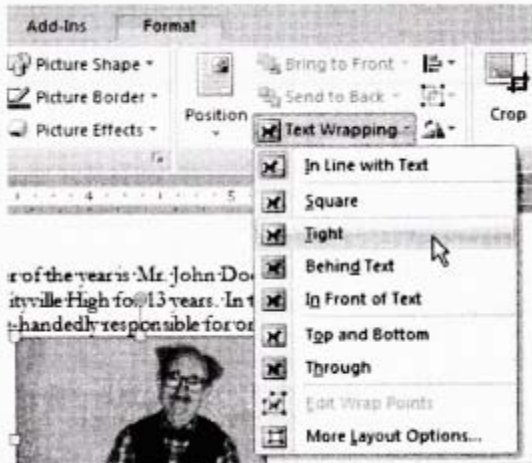
Answer:

Wrap Text Around a Picture

Steps to wrap text around a picture in a document are as follows:

- **Step 1:** Select the **picture**.
- **Step 2:** Select the **Picture Tools Format** tab. (This tab appears only after insertion of a picture).

- **Step 3:** Click the Text Wrapping in the Arrange group.



- **Step 4:** Select any one option from the drop down list. In this example, we will select Tight.
- **Step 5:** Move the picture around to see how the text wraps for each setting.
- **Step 6:** The Position button has pre-defined text wrapping settings. The Position button is placed to the left of the Text Wrapping button.
- **Step 7:** Click the **Position** button and a drop down list of Text Wrapping options will appear. Move your cursor over the various text wrapping styles. A live preview of text wrapping will appear in the document.
If you cannot get your text wrapped the way you wish, select **More Layout Options...** from the Position menu. You can make more precise changes from the **Advanced Layout** dialog box that appears.

Question 5.

Write the steps to compress a picture.

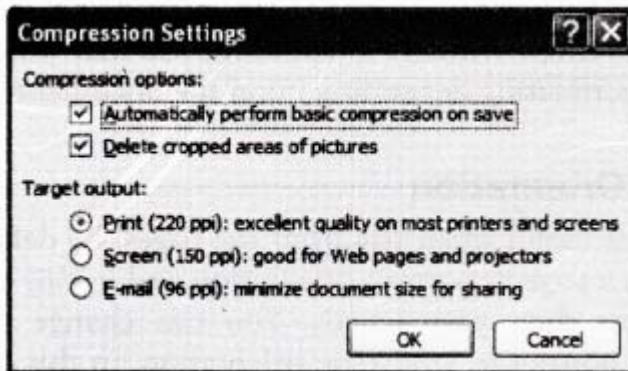
Answer:

Steps to compress a picture in a document are as follows:

- **Step 1:** Select the **picture**.
- **Step 2:** Click the **Picture Tools Format** tab.
- **Step 3:** Click the **Compress Pictures** in the Adjust group. A Compress Pictures dialog box will appear as shown below:



- **Step 4:** Click the **Options...** button to access the **Compression Settings** dialog box as shown below:



- **Step 5:** Choose any of the **Target output:** as per the requirement.
- **Step 6:** Click on the check box(s) under the **Compression options:** as per the requirement.
- **Step 7:** Click **OK** button in the Compression Settings dialog box.

Question 6.

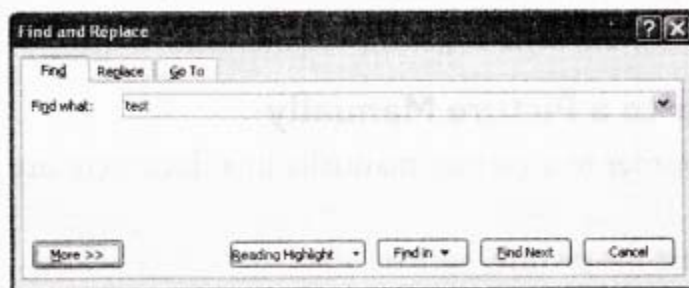
How to find and replace the text?

Answer:

It is the act of finding some text and replacing it with an alternative text.

The Find and Replace option helps you to search a particular letter, word, phrase or sentence in your document and then replace it, if you want. Steps to use the find and replace feature in a document are as follows:

- **Step 1:** Click **Home** tab → click on **Find** or **Replace** option in the Editing group. A **Find and Replace** dialog box will appear.
- **Step 2:** In the **Find what:** box, type the text that you want to find.

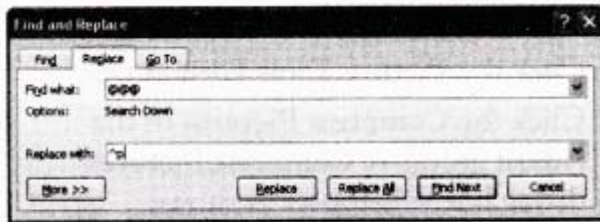


Find and Replace dialog box with Find tab.

or

In the **Replace with:** box, type the text that you want to replace with the original

text.



Find and Replace dialog box with Replace tab

- **Step 3:** Click the **Find Next** button.
- **Step 4:** Click the **Replace** button or **Replace All** button. Keep clicking **Replace** button until the text in entire document has been searched and replaced.
- **Step 5:** Click **Cancel** button.

Application Based Questions

Question 1.

Previous versions of Word looked similar and operated in many of the same ways. They had menus, toolbars, task pane and a 'Familiar' feeling design.

In MS-Word 2007, all these things are replaced with a new navigation system and many new features.

1. What is MS-Word 2007?
2. List new features of MS-Word 2007.

Answer:

1. MS-Word 2007 is the Word processing software in the Microsoft 2007 Office suite.
2. Some new features of MS-Word 2007 are as follows:
 - The Ribbon System
 - Themes
 - Quick Styles
 - Pictures
 - Live Preview
 - Shapes
 - ClipArt
 - Charts
 - SmartArt

Question 2.

Following are some descriptors describing some terms. Identify the terms/features these refer to

1. It is a pre-designed document that you can use to create new documents with the same formatting.
2. It is a tool that you can use to produce professional looking documents.
3. It is a new feature of 2007 Office suite that allows you to see changes in your document before you actually select an item.

Answer:

1. Template
2. Themes
3. Live Preview

Question 3.

Sona wants to add her pictures in a Word document.

1. Which tab she should use?
2. Which command she should use to open Insert Picture dialog box?
3. Can she resize the image?
4. Is it possible to wrap text around an image?

Answer:

1. Insert tab
2. Picture command in the Illustrations group.
3. Yes
4. Yes

Question 4.

A Tablet company sells Tablets and accessories. The head of the company's marketing department has created the following leaflet by using a Word processor. The leaflet will be distributed to all the retail shops, main markets and malls.

ABC Ltd. Special Offers

To celebrate the completion of our five years in business, we are offering these special deals:

- Purchase a new mobile in June and get 50% off on MRP
- Purchase 4 handsets and get one free.

To get more details, please contact to Mr. Naveen on 180010400.

Which of the following two options can improve the layout of the leaflet?

- Line spacing
- Search facility
- Mail merging

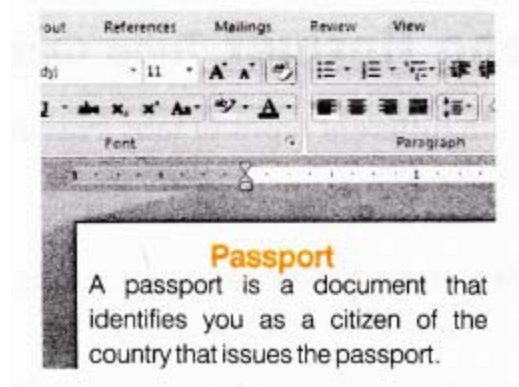
- Center alignments
- Hyperlink

Answer:

Line spacing, Center alignments.

Question 5.

The following figure shows a small part of a Word document. Identify different formatting features that are applied to it.



Answer:

- Center alignment of title
- Bold and color font of title
- Font type it changed for title
- Line spacing in paragraph
- Justified alignment for paragraph

Question 6.

Manu wants to replace the word 'organise1 with 'organize' in a whole document.

1. Name the feature which is used by Manu.
2. Write down the labels in order to show how he could replace the word?
 - (a) In Find what: box, type organise
 - (b) Click Home tab —> Replace in the Editing group.
 - (c) Click the Replace All button.
 - (d) In Replace with: box, type organize.
 - (e) Find and Replace dialog box with Replace tab will appear.

Answer:

1. Mama can replace the word using Find and Replace feature.
2. Label: b e a d c

Multiple Choice Questions

Question 1.

Which extension is given to a document by default in MS-Word?

- (a) .odt
- (b) .com
- (c) .docx
- (d) None of these

Answer:

(c) .docx is the default extension of MS-Word 2007 document.

Question 2.

The Themes group is presented on tab.

- (a) Home
- (b) Page Layout
- (c) References
- (d) Picture Tools Format

Answer:

(b) The Themes group is presented on Page Layout tab.

Question 3.

The status of your document like current page and number of pages are given by

- (a) Formatting toolbar
- (b) Status bar
- (c) Standard toolbar
- (d) None of the above

Answer:

(b) Status bar gives the status of your document like current page number and number of pages.

Question 4.

A new text document can be created by

- (a) File → Open
- (b) File → New → Blank Document → Create
- (c) Open → New → Create
- (d) None of the above

Answer:

(b) Steps to create a new document.

File → New → Blank Document → Create

Question 5.

The documents can be saved by using

- (a) Ctrl+S
- (b) Ffir → Save
- (c) File → Save As
- (d) All of these

Answer:

(d) Documents can be saved by clicking File → Save As, File → Save or using Ctrl+S key.

Question 6.

The general arrangement of the text in the document is

- (a) margin
- (b) text alignment
- (c) clipboard
- (d) formatting

Answer:

(d) Formatting is the general arrangement of the text in the document.

Question 7.

The alignment makes sure that none of the edges of text appear ragged.

- (a) left
- (b) right
- (c) center
- (d) justify

Answer:

(d) Justify alignment makes sure that none of the edges of text appear ragged.

Question 8.

Line spacing or paragraph spacing is measured in terms of lines or points, which is known as

- (a) text wrapping
- (b) PDF
- (c) XPS
- (d) leading

Answer:

(d) When leading is reduced, it automatically brings the lines of text closer.

Question 9.

In the dialog box, you can change both line and paragraph spacing.

- (a) Paragraph
- (b) Line
- (c) Format Spacing
- (d) None of these

Answer:

(a) The Paragraph dialog box can be used to make the document effective by using both line and paragraph spacing.

Question 10.

Which of the following feature is used to revert the original picture?

- (a) Recolor
- (b) Contrast
- (c) Brightness
- (d) Reset picture

Answer:

(d) Reset picture feature of Picture Tools Format is used to revert the original picture.

Question 11.

..... splits text in columns at a specific point.

- (a) Column break
- (b) Page break
- (c) Next page
- (d) Continuous

Answer:

(a) Column break splits text in columns at a specific pointing.

Question 12.

In the Print dialog box, you can select the pages for printing.

- (a) Even pages
- (b) Odd pages
- (c) All pages in range
- (d) All of these

Answer:

(d) You can select the even, odd and all pages in range for printing.

Question 13.

Which shortcut key is used to make the selected text italic?

- (a) Ctrl + I
- (b) Shift + I
- (c) F1 + I
- (d) None of these

Answer:

(a) Ctrl+I is the shortcut key to make the selected text italic.

Question 14.

We can underline the text by

- (a) Ctrl+B
- (b) Ctrl+I
- (c) Ctrl+U
- (d) None of these

Answer:

(c) Ctrl+U is the shortcut key for underlining the text.

Fill in the Blanks

Question 1.

..... is a powerful tool that you can use to create effective documents.

Answer:

MS-Word 2007

Question 2.

Alignment buttons are available on the tab.

Answer:

Home

Question 3.

Shapes option comes under tab.

Answer:

Picture Tools Format

Question 4.

..... is the rectangular area of the document window, where user can type his/her content.

Answer:

Work area or Work space

Question 5.

MS-Word 2007 allows you to insert in your documents.

Answer:

pictures

Question 6.

..... and resizing the picture does not decrease the picture file size, but compression does.

Answer:

Cropping

Question 7.

..... option provides a way to change the size of an image.

Answer:

Compress

Question 8.

..... option is used to adjust the brightness of the picture.

Answer:

Brightness

Question 9.

Portrait format changes the page orientation

Answer:

vertically

Question 10.

..... ruler indicates the width of a document with left and right margins.

Answer:

Horizontal

Question 11.

..... command is used to move the text to a new page.

Answer:

Page break

Question 12.

..... option is used to display a document before printing.

Answer:

Print Preview

True or False

Question 1.

MS-Word 2007 allows you to easily create a variety of professional looking documents using features such as Themes, Styles, SmartArt and more.

Answer:

True

MS-Word 2007 is a powerful tool that allows you to create a variety of professional looking documents because in Word 2007, all the things are replaced with a new navigation system.

Question 2.

MS-Word 2007 tool menu is packed full of lines, arrows, squares and much more.

Answer:

False

Word 2007 tool menu is not packed full of lines, arrows, squares but Word 2007 shapes menu is packed full of all these features.

Question 3.

You cannot modify your Word options and change the defined information that appears.

Answer:

False

Word options and pre-filled information can be modified by using MS-Word 2007 new features.

Question 4.

Editing text in MS-Word 2007 only involves inserting text.

Answer:

False

Editing text means making corrections as desired end results.

Question 5.

The text layout within a paragraph with respect to document margins is called text alignment.

Answer:

True

The text alignment can be horizontal or vertical.

Question 6.

Pictures can be added to Word documents and they cannot be formatted in various ways.

Answer:

False

Pictures can be formatted in various ways after adding it to the Word document like changing the shape, adding a border, modifying effects, applying a predefined style and more.

Question 7.

The distance between the text and the paper edge is called indent.

Answer:

False

The distance between the text and the paper edge is called the margin.

Question 8.

Extra spacing between paragraphs adds emphasis and makes a document easier to read.

Answer:

True

The document can be easily read, if the extra spacing is given between paragraphs it makes the document very attractive.

Question 9.

Decreasing the leading will space the lines out, allowing for improved readability.

Answer:

False

Increasing the leading will space the lines out, allowing for improved readability.

Question 10.

After inserting a picture, a new tab appears.

Answer:

True

After inserting a picture in Word 2007 document, a new tab appears namely Picture Tools Format. This tab helps a user to edit his/her picture according to need.

Question 11.

The entire Word document can be printed by choosing Microsoft Office button → Print and OK.

Answer:

True

Steps for printing the document is
Microsoft Office button → Print and OK.